

Monday 16th June 2025

Dear Families,

Please remember to take part in the mobile phone survey, capturing your voice in deciding what to do about mobile phones in school. The link is adjacent and also on the phone survey PDF attached. [Edurio](#)

As our Year 11 students complete their final week of exams, we want to take a moment to reflect on their journey and share our continued commitment to their future success.

At the heart of our belonging principles, is the belief that every student deserves the opportunity to thrive. All students have access to meaningful experiences such as work placements, practice interviews, careers advice, and support with college applications. These opportunities are designed to help students explore their ambitions and prepare for the next stage of their journey.

We are incredibly proud of the effort and determination shown by our students. A common thread among those who achieve highly, is their ambition. We want every student to dream big, set high standards, and believe in their potential to make a difference. Many of our former students have gone on to succeed in high-profile roles and contribute positively to the world and there is no reason why every student shouldn't aim just as high.

We are here to support every student in doing just that. Our goal is to be relentlessly ambitious on their behalf, providing the guidance, encouragement, and opportunities they need to get the very best start in life.

Jim Taylor

Headteacher



Diary Dates: Collaboration day is next **Friday 20th June**. School will be closed to all pupils on this day.

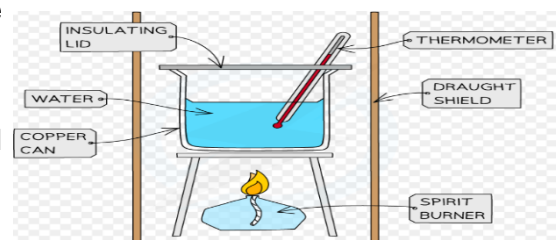


STEM Science:

This week, Year 7 students took on a survival-themed science challenge: stranded on a desert island, which crisp would provide the most energy? With no packaging to rely on, students used Bunsen burners, clamp stands, boiling tubes, and thermometers to measure the energy released from different crisps.

Monster Munch may have come out on top, but the real win was the students' enthusiasm and scientific thinking. Next lesson, they'll analyse their results, calculate averages, create graphs, and evaluate their investigations—developing key science skills every step of the way.

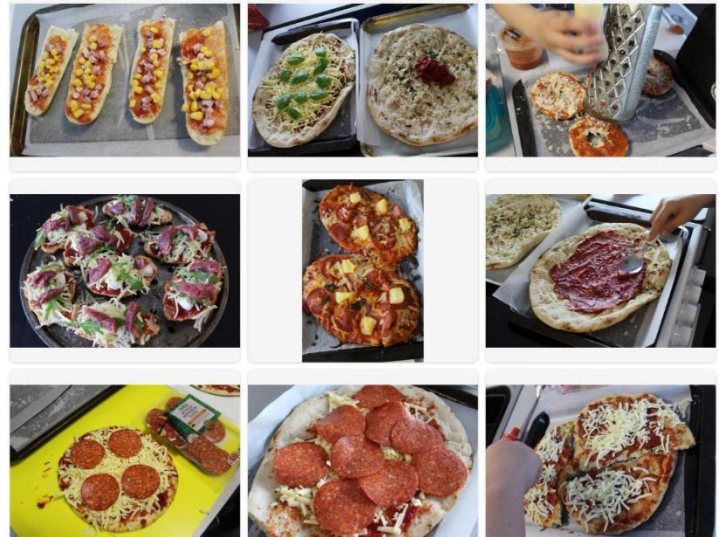
These are students in year 7 being exposed to GCSE required practical's, with this one on 'calorimetry'. The content of this practical and plotting the resulting energy graphs is usually examined on GCSE papers. It's a tough question, not so tough if you've enjoyed and remember completing the experiment. Well done year 7.



STEM: Food Technology

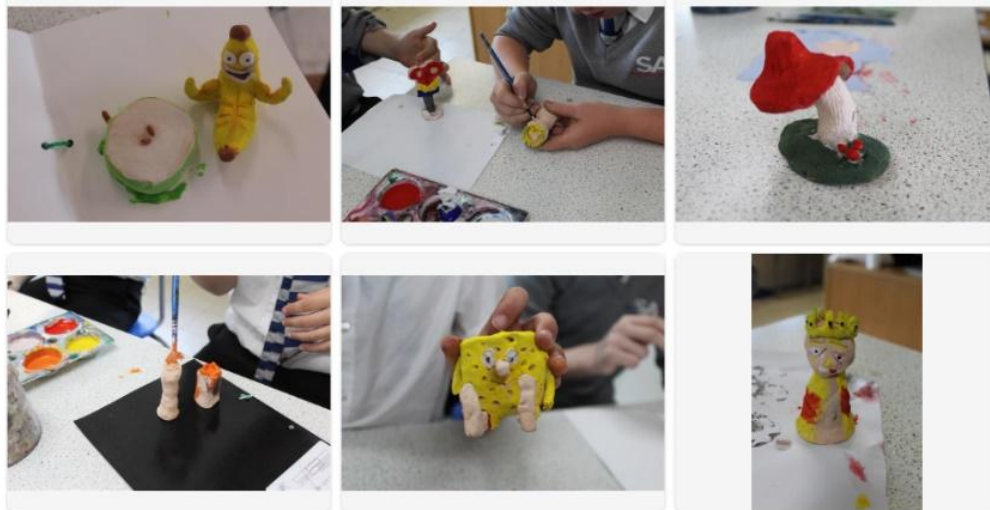
This week in Food Technology, our Year 7 students enjoyed a fun and creative pizza-making session! They brought in a fantastic variety of bases, from classic pizza dough to inventive choices like baguettes, croissants, and bagels. The room was filled with enthusiasm as students experimented with different toppings and flavour combinations. It was wonderful to see their excitement and imagination come to life in the kitchen!

Food Technology has always been a popular course with Mrs Higgins; however, the new facilities are taking this to a different level. Superb work and smells in the STEM block!



Art – Ceramics

Our Year 8 Art students have reached an exciting stage in their ceramics project! After carefully crafting and firing their clay pieces in the kiln, they've now begun painting them. It's been a joy to see their creativity shine. From bold colour choices to thoughtful details, each piece is coming to life in unique and expressive ways. We're looking forward to the next step: glazing, which will add that glossy, ceramic finish and bring their hard work to a brilliant conclusion. These creative skills are required in key stage 4 for students to be successful. It's great to see them being developed in year 8!



Shrewsbury Academy
Part of the Marshes Academy Trust



Summer Term Programme
Part 2 June/July

Tuesday 3 June – Science (geology to be specific) rocks! Model and marvel at the formation of intrusive and extrusive igneous rocks. Great for anyone who loves a microscope and sparkly crystals! **Loved this – geologists can strike it lucky in many fields from extracting oil or mining diamonds to studying the surface of the moon!**

Tuesday 10 June – No STEAM Club today due to whole staff training.

Tuesday 17 June – Give us a wave! Made from jelly babies! Teamwork will make the dream work as we pull together to make a giant wave machine – yes you guessed it – made from jelly babies. Then your fabulous Science Teachers will make a baby scream! Aghhhhhhhhhhh! **Wonderful waves and the world of physics offers a multitude of careers: from audiology to radiology, there are hundreds of jobs that require knowledge of waves. Isn't physics fabulous!**

Tuesday 24 June – Burning Bunsens! Learn the levitating flame trick inspired by the principles of a miner's safety lamp. Then make a cloud in a can. **Love fire? Why not join the fire brigade or train as a pyrotechnic!**



Lunchtime Board Games Clubs

Who: All years

When & where:

Mondays: GC3 & H12

Tuesdays: GC3 & H13

Wednesdays: GC3 & H13

Thursdays: GC3 & H13

Fridays: GC3 & H12

What: A variety of board games are available, just come with your lunch!



PE SUMMER INTERHOUSE

🔥 Summer Interhouse Competitions – Final Week of Term! 🔥

Get ready for some fun and friendly competition! Our **Summer Interhouse** events will take place during the **last week of term**. All year groups are welcome, and teams will be **mixed gender**.

Events Schedule:

- **Rounders** – Monday, 21st July Afterschool
- **Cricket** – Tuesday, 22nd July Afterschool

Bring your house spirit and join in! Pop down to PE to sign up.



Before and After School PE Clubs

SHREWSBURY ACADEMY SPORTS NEWS

Physical Education Clubs Programme – Summer 2025

| Day | Before School | After School |
|--|---|---|
| Monday | | All Years – Athletics - Mr Dobson, Mr Dean, Miss Weaver, Miss Verrilli (Front Field) |
| Tuesday | All Years - Fitness – Miss Weaver (Fitness Suite) | All Years – Cricket (Boys and Girls) Mr Lawrenson, Mr Dean (Front Yard) All Years – Fitness – Miss Verrilli (Fitness Suite) |
| Wednesday | All Years - Fitness - Mr Dobson (Fitness Suite) | All Years –Rounders- Miss Weaver, Miss Verrilli (Back Field) (This will be split in Year Groups) All Years – Fitness - Mr Dobson (Fitness Suite) |
| Thursday | All Years - Fitness - Mr Dean (Fitness Suite) | School Meetings (No Clubs) |
| Friday | All Years - Fitness – Miss Verrilli (Fitness Suite) | All Years - Fitness – Mr Lawrenson (Fitness Suite) |
| Details: All Before school clubs will run from 7.30am – 8.30am unless stated All After school clubs will run from 3.10pm until 4.10pm Please speak to a member of staff who is running the club if further details required. Full PE kit is always expected to be worn for all extra-curricular activities. | | |



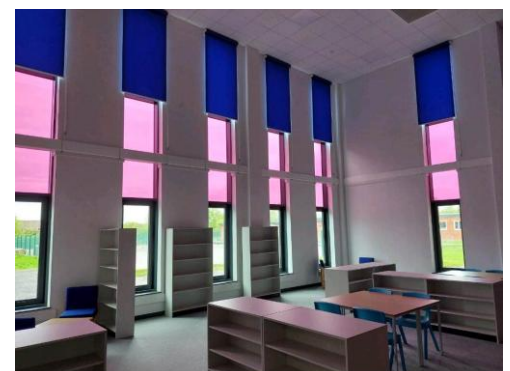
Our New LRC

We are excited to share that our Library or Learning Resource Centre is becoming a vibrant hub for learning once again. This beautiful space is now being used regularly for reading interventions and small group work, helping to support students in a targeted calm and focused environment.

However, while the space itself is inspiring, our book collection is currently limited. Although we've begun investing in new titles, many of our reference books are outdated, and we are keen to provide students with a wider, more relevant range of reading materials.

We're reaching out to ask for your support. By clicking the adjacent QR code will help in contributing through book tokens, you can help us restock our library with high-quality, engaging books that will benefit all students.

Your support could make a real difference.



SEND at Shrewsbury Academy

If you have any concerns regarding a student's learning needs or would like to request additional support or advice, our **Student Support Team** is here to help.

Please complete the **internal SEND referral form** and send it to: sendadmin@shr.mmat.co.uk

Our **Special Educational Needs Coordinator (SENCO)**, **Laura Richmond**, works closely with the SEND team to ensure that every student receives the appropriate support. Laura is available to provide guidance, coordinate interventions, and respond to any SEND-related enquiries.

The **Student Support Department** is currently based in the **Bridge area of the Caradoc Building**, before moving to a refurbished purpose designed area of the school in September, offering a central and accessible space for students.

We are also proud to have opened **The Lighthouse**—a purpose-built internal assessment and alternative area designed to meet a wide range of student needs in a calm and supportive environment.



Community Articles

ROYAL AIR FORCE
REGULAR AIR & RESERVE

NO ORDINARY JOB

FIND YOUR APPRENTICESHIP

The RAF is honoured and delighted to share the news that the Department of Education has officially recognised and ranked the RAF as number 4 in the top 100 Apprenticeship Employers 2024.

We offer Apprenticeships in the following roles:

- ENGINEERING**
Aircraft Technician (Avionics)
Aircraft Technician (Mechanical)
Weapon Technician
Electrician
Survival Equipment Specialist
Vehicle & Mechanical Equipment Technician
General Technician Workshop
- CYBERSPACE**
Communications Infrastructure Technician
Cyberspace Communication Specialist
- LOGISTICS**
Driver
Storeman
Supplier Clerk
Air & Ground Steward
- AIR & SPACE OPERATIONS**
Air Traffic and Weapons Controller
Firefighter
- SECURITY & RESILIENCE**
RAF Police
RAF Regiment Gunner
- MEDICAL SERVICES**
RAF Medical
- INTELLIGENCE**
Intelligence Analyst
- PEOPLE OPERATIONS**
Physical Training Instructor

To find out more about how we can help your students into an apprenticeship please contact our team on:
Email: CRN-CareersEngageMids@mod.gov.uk

Download our App to find out more about a career in the Royal Air Force

Apprenticeships 4



Some of our students have **severe allergies**. Please respect our drive to be a 'nut free school.' Always leave snacks and foods containing nuts at home.

Become a Junior Ambassador



Are you?

- ✓ Aged between 13-17
- ✓ Confident and Outgoing
- ✓ Interested in meeting people from around the world

Why Join?

- FREE Trips to Liverpool, Manchester, Alton Towers and many more....
- Join our discos and sports days at Shrewsbury School.
- Gain new skills and great life experiences.



JOIN NOW

equity@severnvalley.co.uk 01743 232505
www.severnvalley.co.uk

To Become an Ambassador please register through our website, email or by clicking **JOIN NOW**
Please note that all excursions and on site activities are subject to availability and that on some excursions places may be limited

Most pharmacies can help you with **seven common conditions** without needing a GP appointment

- Sinusitis (adults and children aged 12 years and over)
- Sore throat (adults and children aged 5 years and over)
- Earache (children and young adults aged 1 year to 17 years)
- Infected insect bite (adults and children aged 1 year and over)
- Impetigo (adults and children aged 1 year and over)
- Shingles (adults aged 18 years and over)
- Urinary tract infection (women, aged 16 to 64 years)

Ask your pharmacy for more information about this free* NHS service

Visit your Pharmacy First!

*NHS prescription charge rules apply where a medicine is supplied



Click [here](#) to view our latest news articles.

Why not also follow us on Facebook @[ShrewsburyAcademy](#) for a wealth of content, from student, staff and school celebrations to competitions. We encourage you to get interactive with our posts!

To hear about news from across the Trust, why not also follow @[MarchesAcademyTrust](#).

Want to work for the Marches Multi Academy trust? Follow the link below:

<https://www.marchesacademytrust.co.uk/joining-us/how-to-join>



Shrewsbury Academy, Corndon Crescent, Shrewsbury, SY1 4LL
01743 276700
info@shr.mmat.co.uk
shrewsburyacademy.co.uk

