

Planned Careers Programme Overview 2024/25

Shrewsbury Academy



Vision Statement

We strive to enable our students to experience a varied and staged approach to the exploration of career pathways and the development of employability skills across the curriculum and at key decision points, to ensure that students have the essential skills to be work ready. The careers curriculum is aspirational, ensuring all students are aware of the possibilities open to them, delivered through a range of enrichment and extra-curricular opportunities.

Contact: Carl Rogers / Angela Grant
Email: Carl.rogers@shr.mmat.co.uk
Angela.warrilliergrant@shr.mmat.co.uk
Telephone: 01743276700

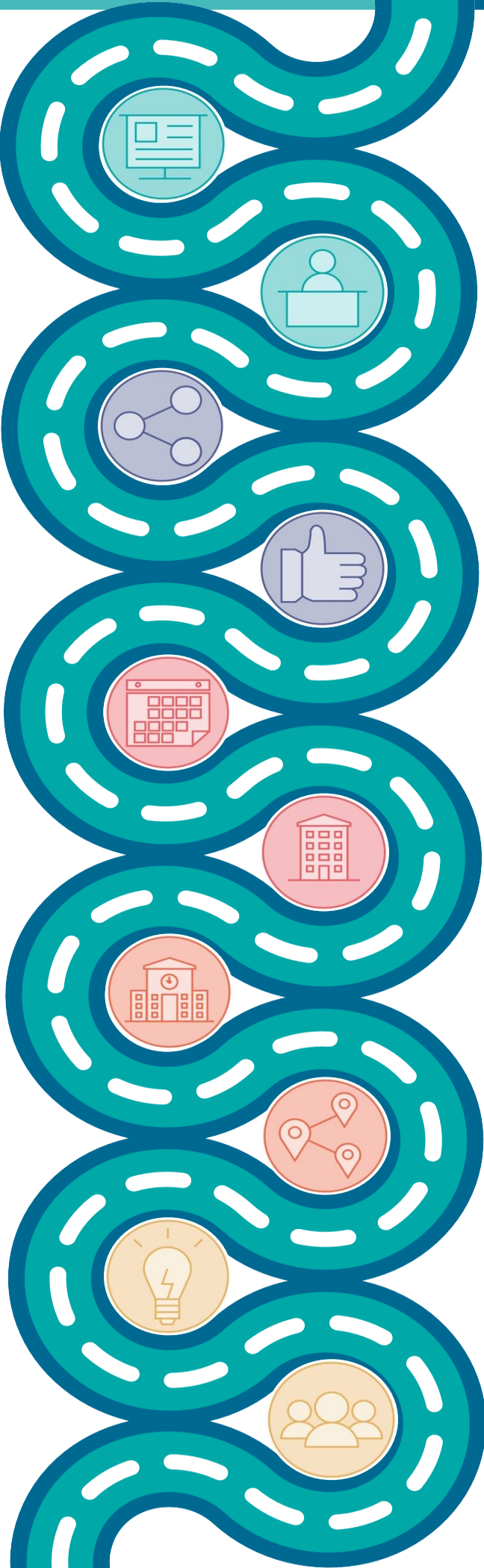
Implementation and Impact Statements

Implementation

- A varied and staged approach to the exploration of career pathways and the development of employability skills across the curriculum and at key decision points, to ensure that students have the essential skills to be work ready. Career's education fits within our Futures Pathway and has a dedicated half term each year. Careers events also take place across the academic year.
- **Curriculum:** A careers curriculum that is aspirational, ensuring all students are aware of the possibilities open to them, delivered through a range of enrichment and extra-curricular opportunities.
 - **High Standards:** Extensive support for students and parents to ensure students are best prepared for their Post 16 choices to maximise potential.
 - **Intelligent assessment:** Tracking of students' career aspirations and progress towards achieving them through Compass+, across each Key Stage, help to guide the tailored provision offered at each key point. All students have access to UniFrog
 - **Equipped:** Use and inform students of up to date local and national Labour Market Information to help them appreciate the role of British Industry and independently manage each stage of their career within it.
 - **Values:** Promotion of the rights and responsibilities of both employers and employees, helping students to develop the appropriate attitudes and values required to become work ready.
 - **Esteem:** Believe in and build students' self-esteem and develop confidence and resilience to aim high and attain their career aspirations.
 - **Dedicated careers advisor:** We employ a dedicated careers advisor, to offer impartial advice to our students on the next steps in their academic journey.
 - **SEND Support:** Send students are fully supported in throughout the application process including additional visits and interview practice.

Impact

Pupils will make informed decisions at crucial transition points within their educational journey at the end of KS3 and KS4. They will have had experience of a wide range of opportunities, interests and options so they are best placed to make informed decisions about their future choices. Developing the skills needed for them to be employable, whether that is voluntarily or paid. Pupils will know the value of having work and commitments in their lives. They will understand that they have a valued and important part to play in the world in which they live, and they can and are motivated to contribute to society in a way which best suits their interests and skills. Pupils will know about and make use of the range of support and advice that is available to them in order to support their choices and decision making as the progress on from The Marches.



Events and Experiences

Year 11

- Careers Fair
- College Visits
- 1-1 Careers interview
- Duke of Edinburgh
- College Taster Day
- Apprenticeship Assembly
- Careers Focus Day
- Armed Forces Visiting Speaker
- Unifrog Sessions
- Resilience day
- NCS Launch
- LLS Presentation
- CV/personal statement writing
- NHS taster Days
- Application Support

Year 10

- Careers Fair
- Mock interview day
- Work Experience
- Post-16 Provider Event
- University Visit
- Public Services Assembly
- Access to Careers Interview
- Unifrog Access
- Careers Focus Day
- Severnvale Ambassadors Program
- CV/Personal Statement writing
- Shrewsbury School Visit
- Employability Skills
- An Inspector Calls Theatre Visit
- Armed Forces - Cyber Attack event
- T Level Presentation

Year 9

- Careers Fair
- Speed Networking Event
- Public Services Assembly
- Access to Careers Interview
- Y9 Subject Options Event
- External Careers Assemblies
- Careers Focus Day
- Shrewsbury School Visit
- Cadbury's World Visit
- Severnvale Ambassadors Program
- Armed Forces Apprenticeships Presentation
- Careers Focus day
- Unifrog access
- T Level Presentation

Year 8

- Unifrog access
- Chester Zoo Visit
- Access to Careers Interview
- External Careers Assemblies
- Careers Focus Day
- The Tempest Theatre Visit
- Financial Awareness and Career Planning focus sessions
- National Apprenticeship week
- Careers Speed Networking
- Severnvale Ambassadors Program

Year 7

- Careers Fair
- Theatre Severn Visit
- University Visit
- Access to Careers Interview
- External Careers Assemblies
- Introduction to Unifrog
- Careers Focus day
- Skills Review
- National Apprenticeship week
- University fair