

**Join us for Open Evening on Thursday 26<sup>th</sup> of September 4.30-7.30pm.**

## Dear Families

We are now fully into the swing of the term. We are delighted to be taking full advantage of our new facilities and state of the art learning environments. We are really excited that the school extension is taking shape, along with the new library. Science labs, Maths classrooms, and the Creative classrooms will be available to us around February time (photos below). It is a truly exciting period. I am also delighted to announce that plans are in place to build a new full size sports hall, something that the staff and students have been desperate for. We would very much like this to be available for the whole community to access.

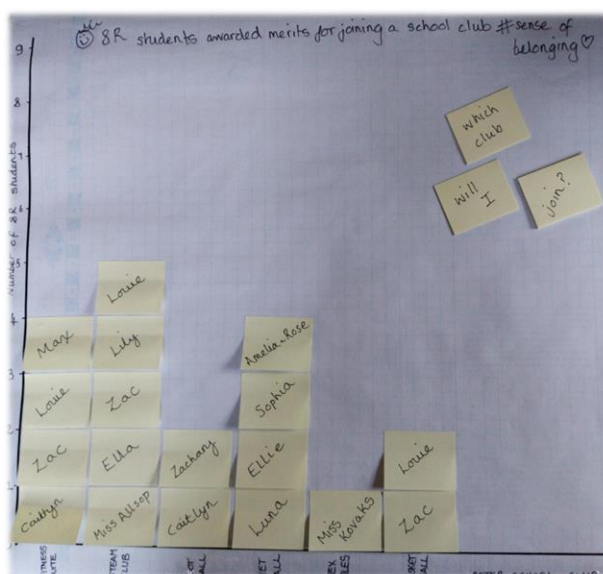
We are beginning a new phase in the history of the school. We are encouraged by vastly improved GCSE outcomes, good behaviour, and consistent learning and engagement within our classrooms. We have been following the work of author, Doug Lemov, who in his book 'Teach like a Champion', demonstrates ways for us to be more consistent as a staff body. All students will be able to describe these strategies such as turn and talk or cold calling, as they are seeing them daily in classrooms. We want all of our improvements to be based on solid and proven research and we are seeing positive change as a result.



Mr Jim Taylor  
Headteacher



Belonging is a key focus that we are developing at Shrewsbury Academy. Pictured above, students are learning Life Skills in the new Haughmond Building. Our Forest and outdoor skills gets underway at Preston Montford. To the right 8R's Belonging Bar Chart, mapping their participation in clubs and activities in school.



## Shrewsbury Academy Website

Over the summer our new website has gone live. It's much more modern and easy to use and will be kept fully up to date with all events in school.

All term dates, staff details, our policies, governors details, as well as clubs, contact details can be found on here.

There are still some aspects to be added which is improving every day. Please take a look as a first port of call if you require any information or guidance.

The web address hasn't changed, it is [www.shrewsburyacademy.co.uk](http://www.shrewsburyacademy.co.uk)



## OPEN EVENING

Join us for **Open Evening** on **Thursday 26<sup>th</sup> of September 4.30-7.30pm**. Each department will showcase their classrooms with activities and prizes available.



## Why not join us for Coffee at 9.30am until 10.30am on Friday 27<sup>th</sup> of September?

It's for a good cause to raise money for MacMillan Cancer Support, a cause close to many of our hearts. We will host this in the new Haughmond Building dining Area – the new entrance is off East Crescent on the south side of our campus.



## SEND Queries

If you have concerns regarding a student's learning needs, would like to request additional support/advice please complete the internal SEND referral form and send it to the following email address: [sendadmin@shr.mmat.co.uk](mailto:sendadmin@shr.mmat.co.uk). Our Send Department are now based in the Hub area of the Haughmond Building, taking advantage of their new amazing facilities, life skills cooking area, and outdoor learning spaces. The entrance is off **East Crescent** on the South side of the campus.



Tuesday 10<sup>th</sup> September. Boom! We're off! Come & make bombs .... for your bath!  
[Like this? Study chemistry and develop cosmetics for big retailers.](#)

Tuesday 17<sup>th</sup> September. Get gross and gruesome; look at blood, stings and other yucky things under the microscope! [Enjoyed this? Microbiology could be the career for you!](#)

Tuesday 24<sup>th</sup> September. Science party tricks; make a teabag fly and a candle drink! Pick up an ice cube with just string!  
[Liked this? Lots of physics & chemistry here so studying & working in STEAM holds a great future for you.](#)

Tuesday 1<sup>st</sup> October. Ssshh..... STEAM Club joins the secret service! We make and investigate invisible inks. [Why not study forensics or join the police force and become a detective.](#) Or if you want to develop spy techniques to protect the UK consider working in GCHQ or MI5.

Tuesday 8<sup>th</sup> October. Halloween approaches..... we make ghost eggs! [Biology explains particle movement here & applies to healthcare situations e.g. dialysis. Why not train as a dialysis nurse?](#)

Tuesday 15<sup>th</sup> October. Get ready for Halloween with an eyeball dissection. [Enjoyed this? Why not train to become an ophthalmologist or optometrist?](#)

Making teabags fly, paper clips float and candles drink are amongst some of the science experiments our brilliant STEAM Club scientists are learning. More than 20 students attended and were helped by our fantastic young STEAM Club leaders in Year 10 and Year 11. This leadership experience will look great on their college application forms. Well done all! See you next week for blood, guts and gore... under the microscope. Plus, Miss Allsop's hairy spider! And a few more science tricks with paperclips and ice cubes!



Information

Family Drop-ins  
How can we help you?



Scan to see locations and dates all across Shropshire!

Free information, advice and support around;

- Family Life
- Domestic Abuse support
- Housing and Finance support
- Special Educational Needs and/or Disabilities (SEND) support
- Parenting support
- Little Stars - Baby Bank/ school uniforms
- Training and Employment support and much more

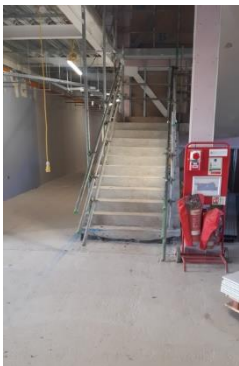
Supporting families with children aged 0-19 years (up to 25 years for young people with special educational needs and disabilities)  
We aim to make it easier for you to ask for help and get support when you need it.



Some of our students have **severe allergies**, please respect our drive to be a 'nut free school.' Please leave snacks and foods containing nuts at home.



Latest Build Updates - Our extension taking shape!



NEWS



Click [here](#) to view our latest news articles.

Why not also follow us on Facebook @[ShrewsburyAcademy](#) for a wealth of content, from student, staff and school celebrations, to competitions. We encourage you to get interactive with our posts!



To hear about news from across the Trust, why not also follow @[MarchesAcademyTrust](#).



| Shrewsbury Academy, Corndon Crescent, Shrewsbury, SY1 4LL  
| 01743 276700  
| [info@shr.mmat.co.uk](mailto:info@shr.mmat.co.uk)  
| [shrewsburyacademy.co.uk](http://shrewsburyacademy.co.uk)