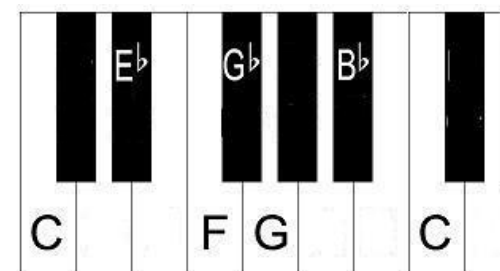




1. Introduction to The Blues

Understanding of historical context, Basic 12 Bar Blues Structure.

I	I	I	I
IV	IV	I	I
V	IV	I	V



2. The Blues Scale

Understanding of typical Blues harmony.

Mid-term Theory Assessment

Checkpoint
Mid-Term Theory Assessment

4. 'Tension Chords

Begin to understand the use of Chord Extensions – 7 Chords

I IV V
I7 VI7 V7

3. Developing a Blues Performance

Perform an example of a 12 bar blues structure using the Blues Scale

Checkpoint
Composing Assessment

5. Development of Blues Lyrics

Use of AAB Structure to create suitable Blues Lyrics

AAB



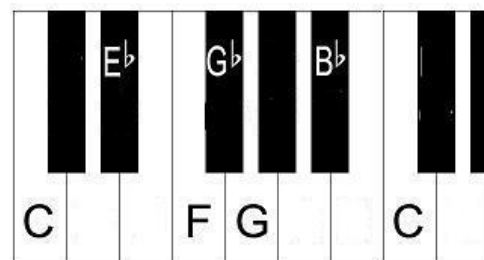
6. Final Composition

To be recorded with partner, submitted on MS Teams



1. Introduction to Improvisation

Use of the Blues Scale to understand how Improvisation is used in Jazz.



Performance mini-assessment – audio recording on MS Teams, feedback given.

2. Swing Rhythm

Develop use of Swung quaver rhythms,



Checkpoint
Mid-Term
Mini-Assessment

4. Use of Repetition

Use repeated patterns, riffs, ostinatos for development of improvised patterns



3. Use of Frontline Instruments

Understanding of typical sonority and instrumentation used for Jazz music.



Checkpoint
Composition
&
Performance
Assessment

5. Chord Vamps & Comping

Use of Chord sequences to develop jazz harmony



6. Final Jazz Assessment

Demonstrate a performance of a jazz standard with use of appropriate improvised solo.

Year 8 – Spring 1

Musical Theatre

Component 1: Performing, Component 3: Appraising
AoS2: Music For Ensemble, AoS3: Film Music



1. Introduction to Musical Theatre

Brief history of musical theatre, Opera, Music Hall and other examples of music in a theatrical setting

Assessed Appraising task – GCSE style exam question on Teams



2. What Makes up a musical

Understanding of different elements that every music is made up of;
Understanding of different types of musical

Checkpoint
Mid-Term
Assessment



4. Musical on Film

Show the differences between stage and film musicals

3. Libretto & Use of Lyrics

Understanding of story-telling through musical theatre and opera

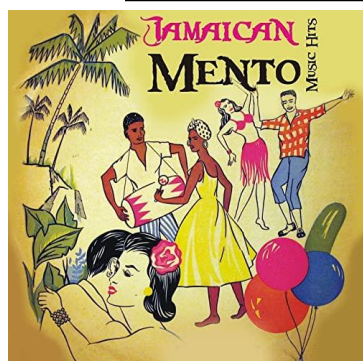
5. Use of Structure

Strophic Form, Verse & Chorus, Through-Composed forms

6. Performance Assessment

Perform an typical example of a musical theatre music

Checkpoint
Final
Performance
Assesment



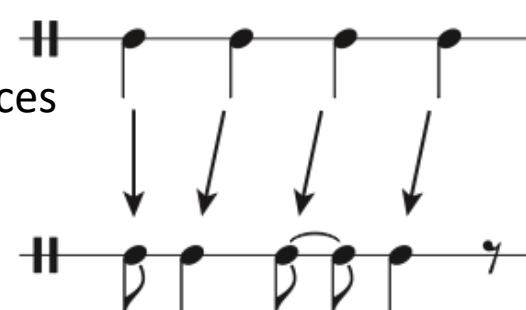
1. Introduction to Music of the Caribbean

Brief history of Reggae, Ska, Mento and Calypso music, music of Caribbean heritage

Assessed Appraising task – GCSE style exam question on Teams

2. Syncopation

Use of syncopation in Reggae chord sequences



Checkpoint
Mid-Term
Appraising
Assessment



4. Use of Lyrics

Understanding the use of lyrics to demonstrate a form of protest



3. Reggae Chord Sequences

Understanding of how chord sequences are used, begin performing *Three Little Birds*

5. Use of Hooks and Bass-lines

Demonstrate the use of hooks and bass lines in group performance



6. Final Performance Assessment

Submit final performance of a typical Reggae song using MS Teams

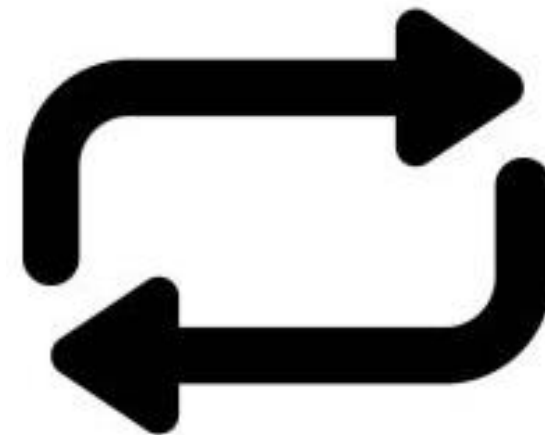
Checkpoint
Final
Performance
Assessment

Year 8 – Summer 1

Hooks, Riffs and Ostinatos

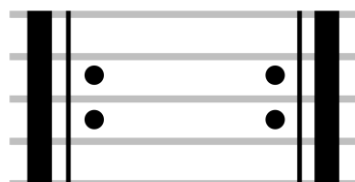
Component 1: Performing, Component 2: Composing

AoS1: Musical Forms & Devices, AoS2: Music for Ensemble



1. Introduction to Repeated patterns

Learn to use repeat symbols in musical notation, understand how repeated patterns are used in a variety of types of music



2. Pop Music Riffs

Learn to perform well known examples of Riffs from Pop songs



Checkpoint
Mid-Term
Performing
Assessment

4. Use of Texture

Melody, Chords and Bass line –
Development of Homophonic
texture



3. Hooks

Show an understanding of how hooks are used in different types of music



Checkpoint
Final
Composing
Assessment

5. Composing Riffs

Begin to compose your own examples of repeated patterns, to a set brief



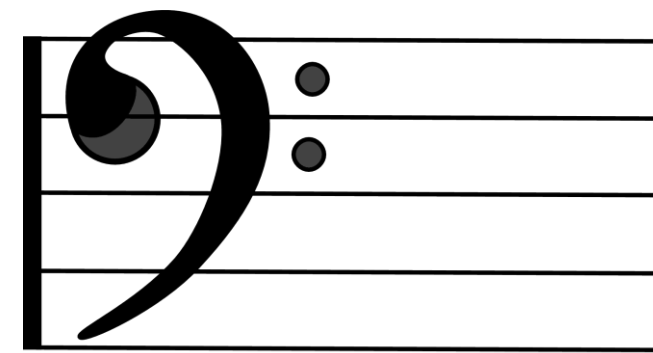
6. Final Composition Assessment

Complete composition by either recording audio or writing a *lead sheet* and instructions, submit on Teams

Year 8 – Summer 2

Bass Lines – Bass Clef

Component 2: Composing, Component 3: Appraising
AoS2: Music for Ensemble, AoS4: Popular Music



1. Introduction to Bass Clef Notation

Introducing Bass Clef and typical bass instrumentation



2. Using GarageBand

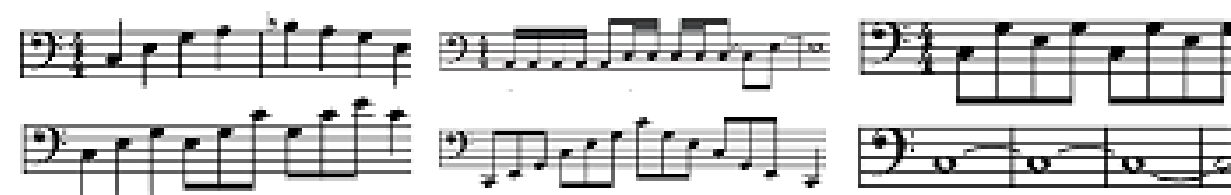
Introduction to composing using GarageBand

Mid-term Theory Assessment
GCSE style exam question on Teams

Checkpoint
Mid-Term
Theory
Assessment

4. Composing a Bassline on GarageBand

Use GarageBand to compose your own bass line showing the appropriate techniques



3. Types of Bass part

Demonstrate the use of Arpeggio/Broken Chords/Alberti Bass

Checkpoint
Composing
Assessment

5. Developing skills for set-brief composition

Create own bass-line ideas using a GCSE style 'set brief' to demonstrate theory and composing knowledge, retrieval practice.

6. Final Composition

To be completed on GarageBand and submitted via MS Teams