

LEARNING Journey

Ceramics

The Big Picture: You will develop your creative knowledge across a range of techniques and disciplines whilst being assessed on your ability to Develop ideas, refine work, Record & Present meaningful outcomes.

After school Life

Sept year 11 used as an Exploration of Natural Forms using a range of 3D formats to sample and possibly lead towards a final outcome.

Ceramics will be added for sampling textures and tones.

Natural World Coursework Unit 1.



10&11

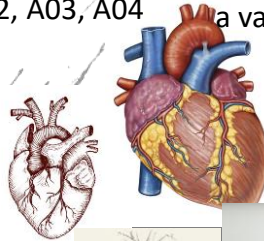
A03- observational drawings of hearts
Experimenting with a variety of medias.

A02/A04- Pupils sampling, modelling towards a final outcome.



GCSE unit focus-
A01, A02, A03, A04

1&2-Organs 9



A01- Artist research- Jemma Millen

A01- Researching James ST Clair Wade.

8

3- Shrewsbury Tile
4- Chess

4-Chess

A01, A02, A04 Focus using artist and cultural research to inspire a chess piece design.

A04- Shrewsbury Tile.



Continuing project started in art. Focusing on developing, refining A02 .



7

5- Cupcake
6- Paint palette



Paint palette

A01- Continuing project started in art researching Claes Oldenberg. Look at new artist Pat Doherty. Focusing on developing A03, refining A02 and producing an A04 outcome.