



# LEARNING Journey

## Ceramics

**The Big Picture:** You will develop your creative knowledge across a range of techniques and disciplines whilst being assessed on your ability to Develop ideas, refine work, Record & Present meaningful outcomes.

### After school Life

Sept year 11 used as an Exploration of Natural Forms using a range of 3D formats to sample and possibly lead towards a final outcome.

Ceramics will be added for sampling textures and tones.

### Natural World Coursework Unit 1.



### 10&11

### KS4 Assessment Criteria

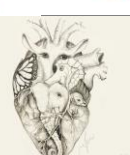
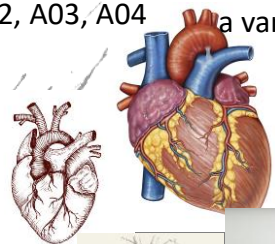
- AO1** Develop ideas through investigations .
- AO2** Refine work by exploring ideas, selecting and experimenting with appropriate media.
- AO3** Record ideas, observations and insights.
- AO4** Present a personal and meaningful response.

GCSE unit focus- A01, A02, A03, A04

A03- observational drawings of hearts Experimenting with a variety of medias.

A02/A04- Pupils sampling, modelling towards a final outcome.

### 1&2-Organs 9



A01- Artist research- Jemma Millen

### 4-Chess



A01, A02, A04 Focus using artist and cultural research to inspire a chess piece design.

A01- Researching James ST Clair Wade.

A04- Shrewsbury Tile.



### 8

3- Shrewsbury Tile  
4- Chess

Continuing project started in art. Focusing on developing, refining A02 .



### 7

5- Cupcake  
6- Paint palette



A01- Continuing project started in art researching Claes Oldenberg. Look at new artist Pat Doherty. Focusing on developing A03, refining A02 and producing an A04 outcome.

Paint palette