

Child Development  
Cambridge National Level 1/2

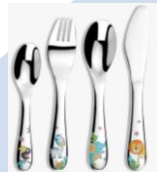
RO58 Create a safe environment and understand the nutritional needs of children from birth to five years  
(Non-exam coursework assessment)

Year 10  
Spring 1  
and 2  
terms



Topic area 2

Choosing suitable equipment for a childcare setting.  
Content - Essential equipment and factors for choice, indoor/outdoor playing for babies and children, factors affecting suitability and choice.



Topic area 1

Creating a safe environment in a childcare setting.

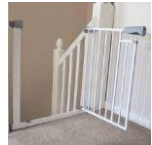
Content - Planning a safe environment, childhood accidents, different areas, safety equipment, supervision/staff requirements.



Topic area 3

Nutritional needs of children from birth to five years.

Content - Current government dietary recommendations, essential nutrients and their functions, plan for preparing a feed/meal, evaluate planning and preparation of a feed/meal.



Year 10  
Autumn 1  
and 2  
terms



This is to be followed by year 10 students from September 2022.

# Child Development Cambridge National Level 1/2

## RO59 Understand the development of a child from one to five years.

**(Non-exam coursework assessment)**

End of  
year 10



### Topic area 1

Physical, intellectual and social developmental norms from one to five years.

Content - Expected norms, physical, intellectual and social development.



### Topic area 2

Stages and types of play and how play benefits development.

Content - Stages of play, types of play, how play benefits development.



### Topic area 3

Observe the development of a child aged one to five years.

Content - Observation and recording.



### Topic area 4

Plan and evaluate play activities for a child aged one to five years for a chosen area of development.

Content - Plan and evaluate activities.



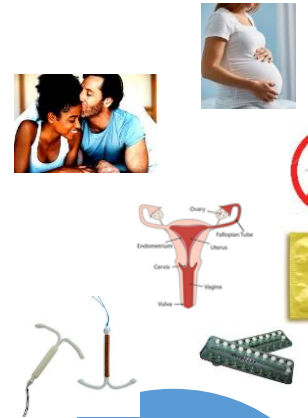
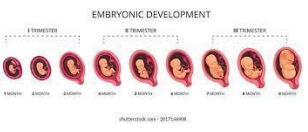
Year 10  
Spring 1  
and 2  
terms

This is to be followed by year 10 students from September 2022

# Child Development Cambridge National Level 1/2

## RO57 Health and well-being for child development. (External assessed exam unit)

End of  
Year 11  
EXAM



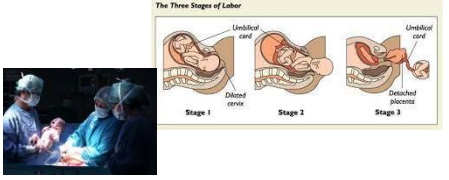
Year 11

**Topic area 1**  
Factors affecting pre-conception health for women and men.  
Content- Contraception, reproductive systems, reproduction and pregnancy.



**Topic area 2**  
Antenatal care and preparation for birth.

Content - Antenatal clinics, screening and diagnostics tests, parenting classes, choices for delivery, role of birth partner, pain relief and signs and stages of labour, assisted birth.



**Topic area 3**  
Postnatal checks, postnatal care and the conditions for development.

Content- Postnatal checks, postnatal care of mother and baby, development needs,



**Topic area 4**  
Childhood illnesses and a child safe environment.

Content - Signs and symptoms of illness in children, needs of an ill child, child friendly safe environment, the importance of safety labelling.

